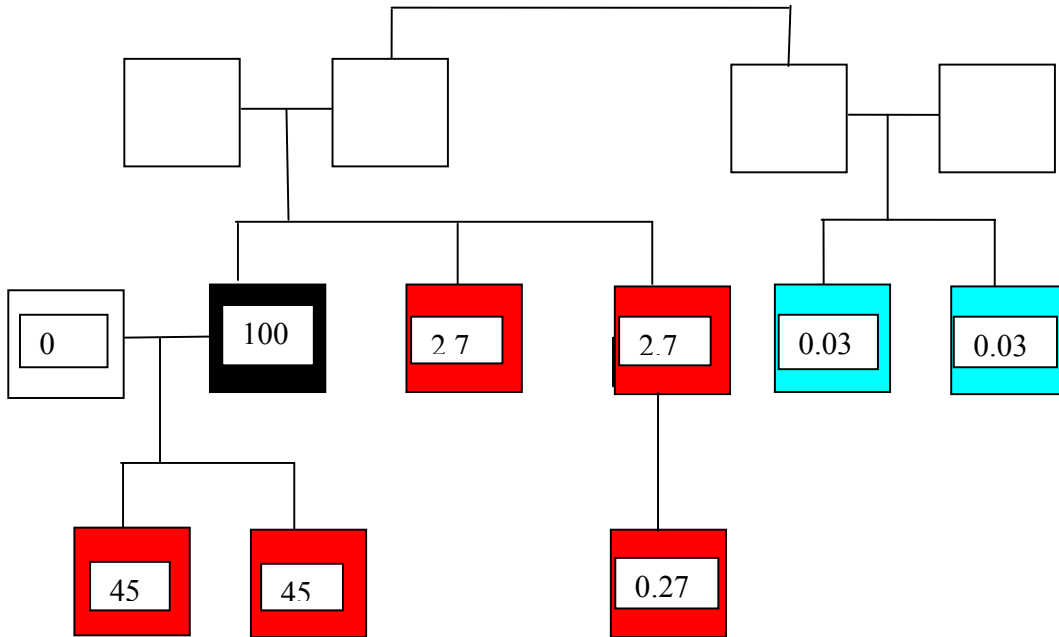
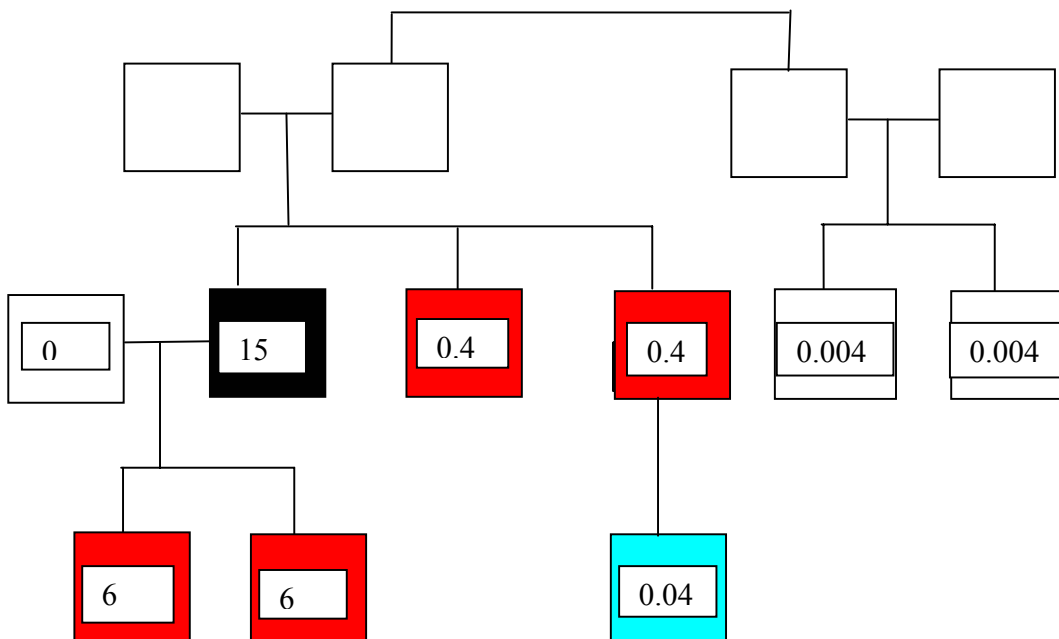


Protocol for retinoblastoma screening

A. Bilateral proband: only member of family affected




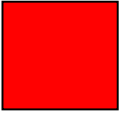
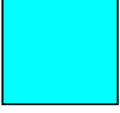
B Unilateral proband: only member of family affected



When the RB1 mutation(s) are not known, the % risk for the relatives of retinoblastoma patients to develop retinoblastoma can be estimated to be high (red) or moderate (turquoise).

Modified from Figure 11. A. Valenzuela, H. S. L. Chan, E. Héon, B. L. Gallie
A Language for Retinoblastoma: Guidelines Through Standard Operating Procedures
Pediatric Retina. Reynolds J, Editor. Kind permission from Prof Brenda Gallie, Hospital
for Sick Children, Toronto.

Key

	Patient with retinoblastoma
	Relative of retinoblastoma patient with high risk of developing retinoblastoma
	Relative of retinoblastoma patient with moderate risk of developing retinoblastoma