

## The Joint R&D Office: Supporting and Promoting Research

Gerry Leonard, Head of Research Resources

## Research at Barts and The London



- Welding together two successful institutions:
  - Barts and The London School of Medicine and Dentistry
  - Barts and The London NHS Trust
- JRO service excellence
  - Governance
  - Training
  - Financial support
- Leadership in East London for R&D

## East London: Unique context for R&D



North East London Strategic Health Authority  
Population 1.54m; projected increase by 310,573 in 15 yrs

**Ethnic and socioeconomic diversity;** for instance the percentage of Black and Minority Ethnic Groups: 68% in Newham to 7% in Havering

**High proportion of young people;** 71% in Tower Hamlets compared to 51% for England/Wales under the age of 40yrs

## Barts and The London: SMD & BLT

- BLT/ SMD Health campus integration
- Significant investment:
- **SMD**
  - Institute of Cell
  - New Innovations Centre
  - Clinical Research Facility
- **BLT**
  - Royal London will be Britain's biggest new hospital:
  - District general hospital and specialist tertiary services
  - London's leading trauma and emergency care centre



## Headline Metrics – 2008/9

- Expenditure on Research Grants and Contracts
 

Trust	SMD	Total
£14.7m	£44.6m	£59.3
- Number of Active Research Grants and Contracts
 

Trust	SMD	Total
223	1,036	1,259
- Value of Applications for Research Grants and Contracts
 

Trust	SMD	Total
£27.1m	£120.6m	£147.7
- Number of Trials on CLRN Portfolio
 

Trust	SMD	Total
66	59	125

## Joint R&D Office

- Since 2003 JRO runs **all** research finance and governance
- Negotiates commercial contracts and provides project costings
  - Prepares site agreements for collaborative projects
  - Administers externally funded projects
  - Authorises research funded posts
  - Provides full support service:
    - Ethics review
    - Risk assessment
    - Audit/ Trial monitoring
    - Training in governance and GCP (for Barts and The London partners and others in NE London)
  - Publishes monthly Bulletin covering information re calls for research and news relating to medical research

## Recent successes



- Clinical Academic Units aligning service, research and teaching
- 2 UKCRN Approved Clinical Trials Units
- Host the country's most research-active CLRN
- Host NE London Diabetes Research Network, Cancer Research Network and Medicine for Children Network
- CV Biomedical Research Unit
- MRC Translational Research Unit
- Formation of Academic Health Sciences Centre (Barts & The London Healthcare)
- Component of UK Public Health Centre of Excellence
- Successful outcome of 2 MHRA audits

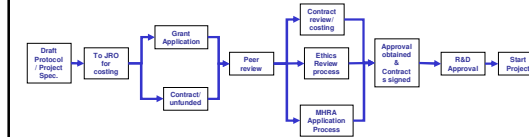
## JRO services

**Pre Award** – Costing and Pricing of research, Contract negotiations, all Pre-Award Application process

**Post Award** – Project financial management including staff. Student appointment authorisation, budget and expenditure management, collection of revenue

**Governance** – Ethics assistance, CSP & Research Governance advice, Research Passport and Honorary Research Contract awarding, Information (ReDa, website, Bulletin)

## Pre-award Process



## External contacts and controls

Facilitating effective R&D trial management, working with:

- Pharmacy: Exchange of information on new studies.
- Laboratories: Exchange of information on new studies.
- Records: Access control
- Finance: Costing, pricing and interface with Governance and Service Departments.
- Ethics: Interface with Governance (risk assessment), Finance (costing), Information Governance (Data protection sign off), R&D Approvals process.
- Other Service Areas: Imaging, cardiac, medical imaging
- Other Administrative sections: General finance (credit control, payments)

## Work in hand

- Co-ordinating & defining our Peer Review processes, now CAUs are maturing
- Developing a future research strategy:
  - Build on strengths
  - Focus on areas of weakness
- Working with other Trusts (acute & PCTs) in Central and East London to provide clarity of vision

## Key upcoming Funding opportunities

- **NIHR Research for Innovation, Speculation and Creativity (RISC) Programme Grants** (Round 3) deadline 4<sup>th</sup> August
- **NIHR Research for Patient Benefit (RfPB) Programme** (Round 10) - outline submissions 14<sup>th</sup> August
- **UKCRC Translational Infection Research Initiative** deadline 1<sup>st</sup> September
- **NIHR Programme Grants** (Round 7) – outline applications 5<sup>th</sup> October
- **MRC Developmental Pathway Funding Scheme** - 1 July
- **MRC Research and Collaboration Grants** – 2<sup>nd</sup> Sept

*This and more detailed in this month's R&D Bulletin*

## Stop Press!

- NIHR call for research on the emerging influenza pandemic.
- Purpose: to provide evidence to influence ongoing policy and practice.
- Timetable is **very short**, to produce results by the end of the year. Expressions of interest must be submitted by **26<sup>th</sup> June**
- Experienced researchers should go to the NETSCC web site ([www.netscc.ac.uk](http://www.netscc.ac.uk)) for further information.

## JRO... here to help!